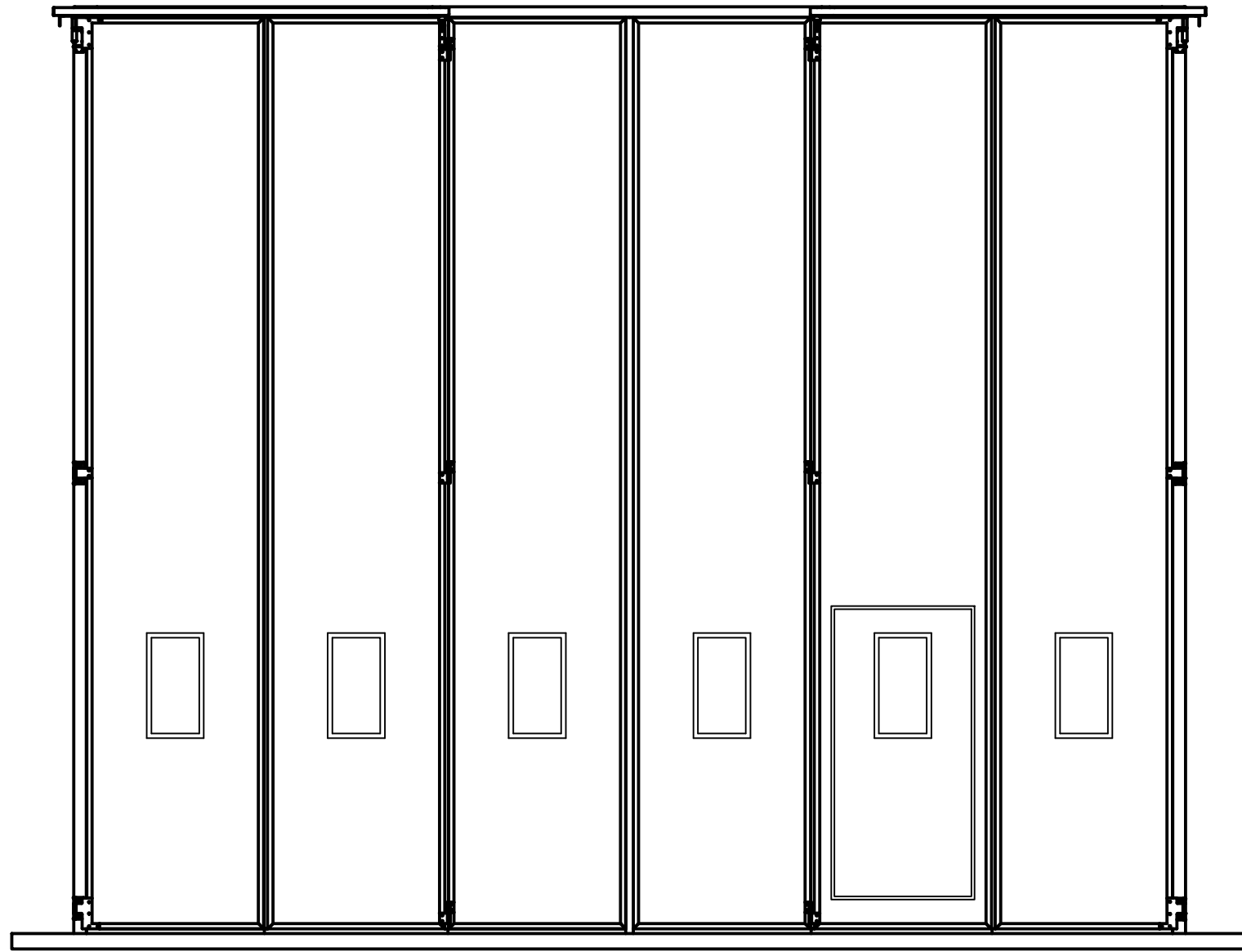
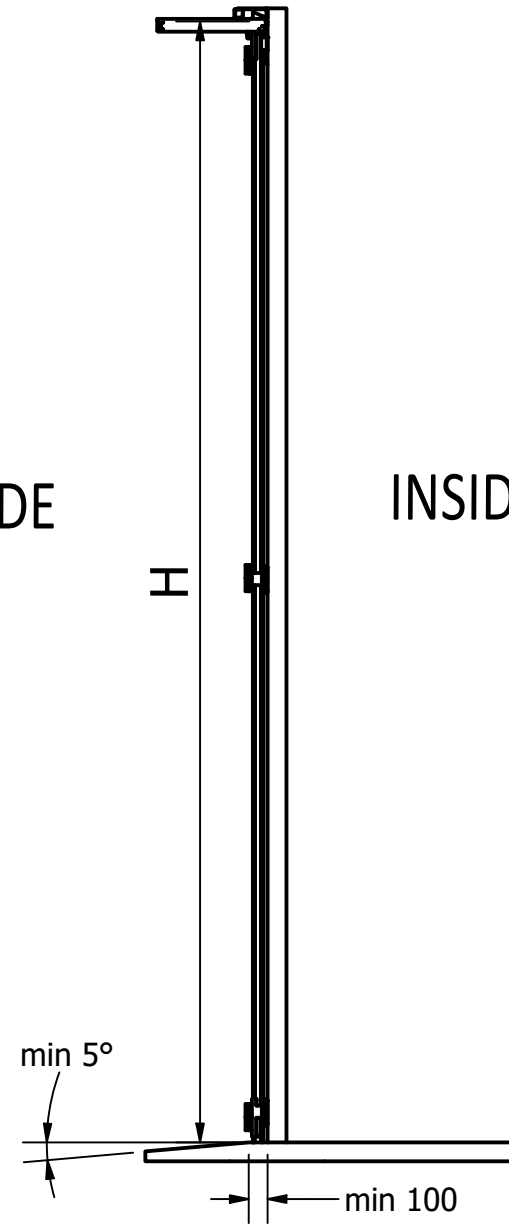


View from outside



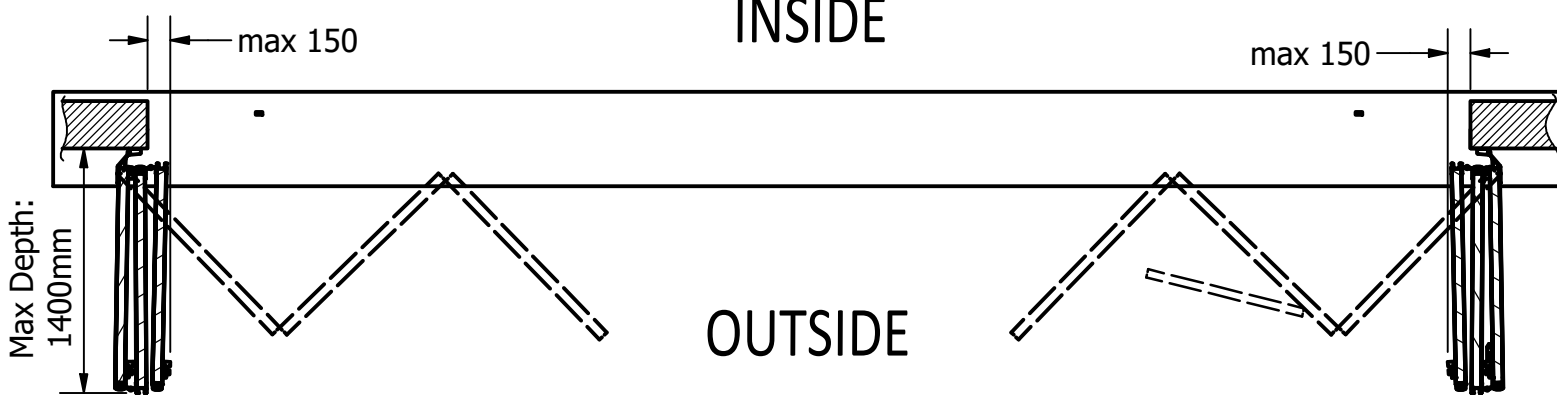
OUTSIDE

INSIDE



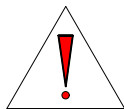
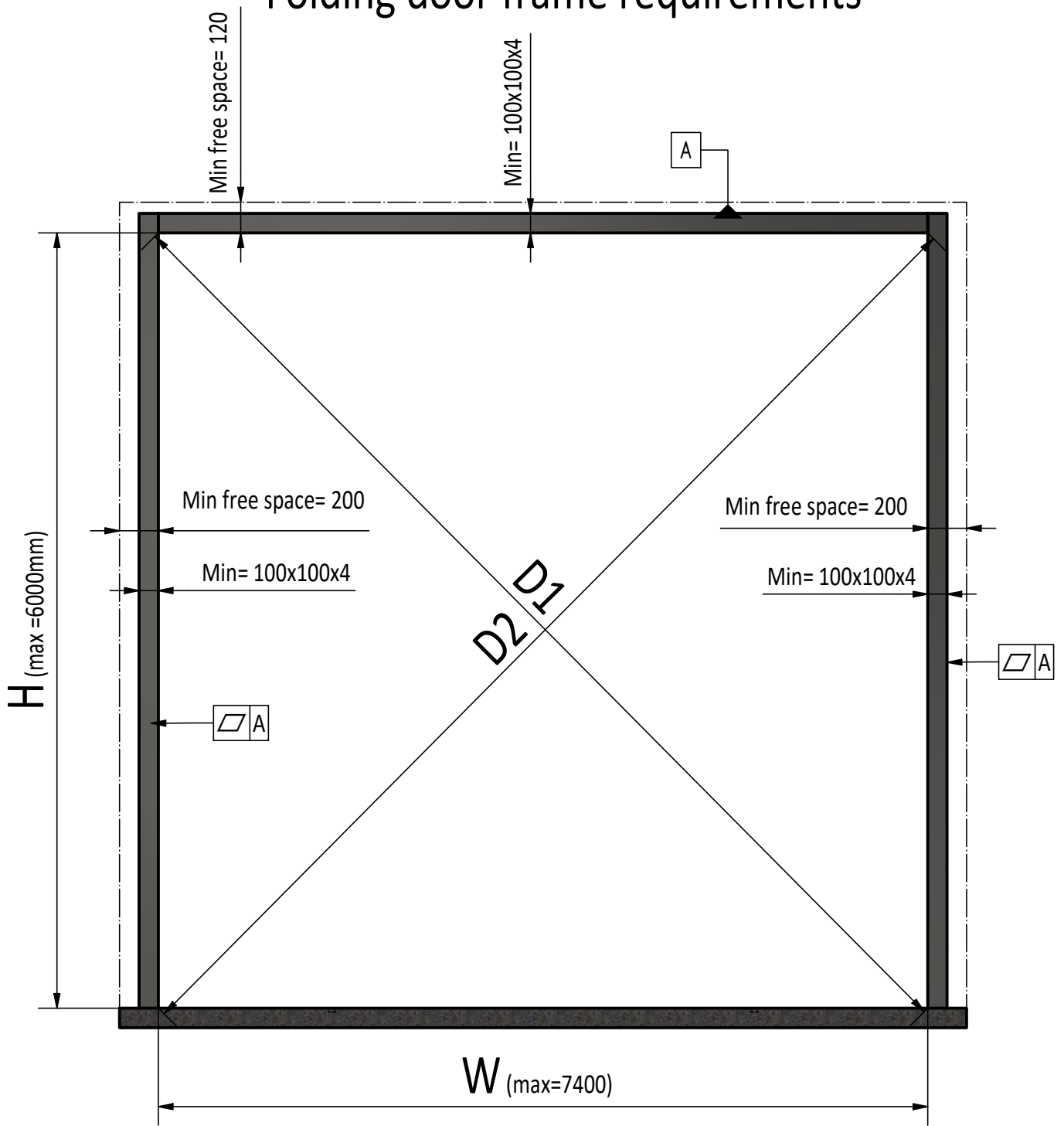
INSIDE

OUTSIDE



						Weight	N/A
						Material	
				Date	Name	Description	
				Drawn	2019-12-03	VPA	Folding doors 6 parts- outside opening
				Approved			
				Drawing Nr.			Rev. R0
				FD.6P.OUT DATA			A3
Rev.	Changes	Date	Name	Project	Folding doors		Scale

Folding door frame requirements



- 1) D1=D2
- 2) Door frame must be in the same plane

Weight

N/A

Material

Rev.	Changes	Date	Name	Project	Date	Name	Description	Drawing Nr.	Rev.
					2019-12-03	VPA	Folding doors 6 parts- outside opening	FD.6P.OUT DATA	R0
									A4
				Folding doors					Scale